



Introduction to

Axiom Intelligence Reporting

Web Tutorial 2019.2 DSS Release

6 Part Web-Tutorial Series



Jen Rispoli
Product Owner, DSS

Lesson 1: The basics. The navigation bar.

Lesson 2: Drilling into the data.

Lesson 3: Creating a tooltip.

Lesson 4: Using bookmarks.

Lesson 5: Applying filters. Using slicers.

Lesson 6: Syncing the model. Security.

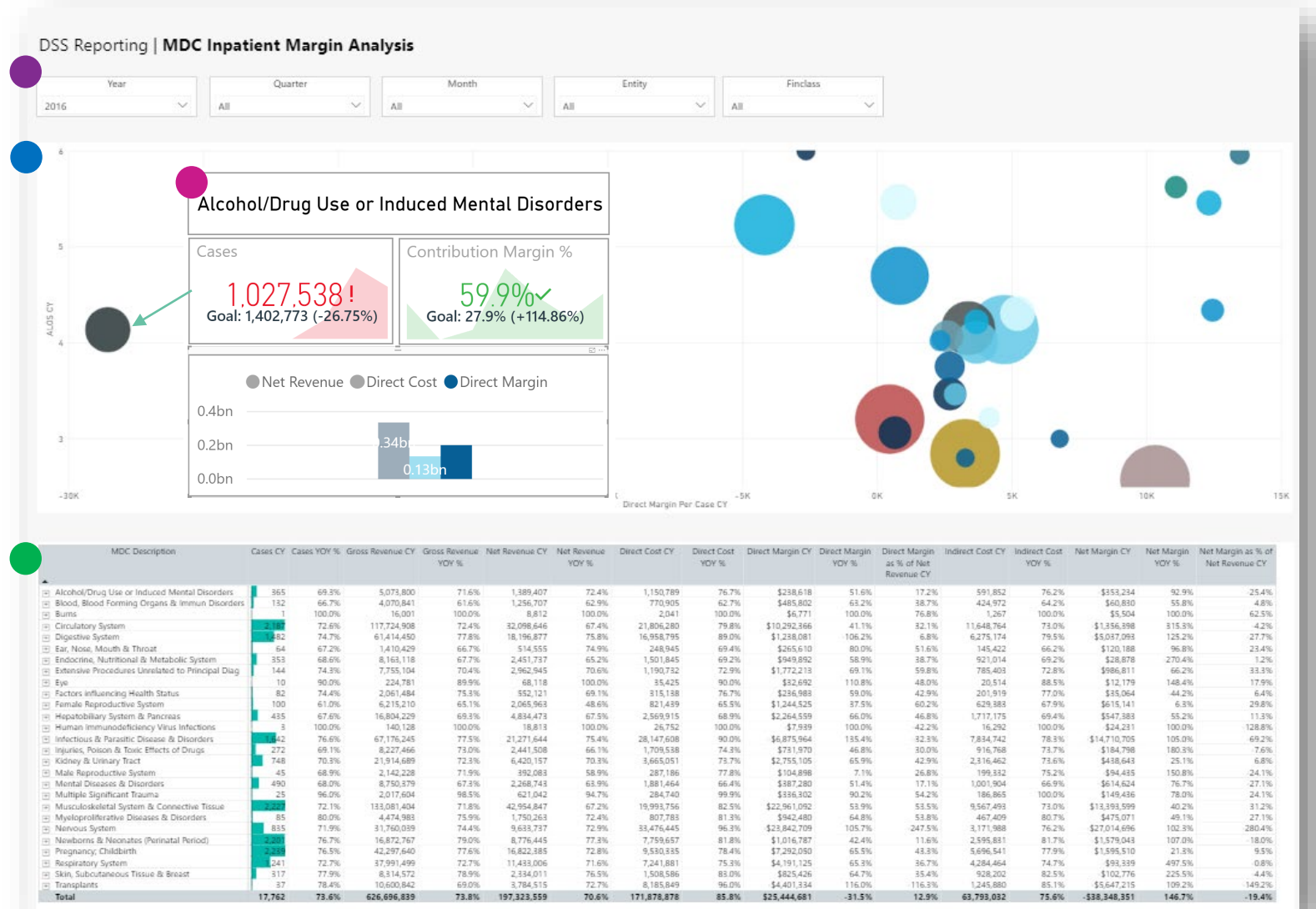
KaufmanHall

Lesson 3

Example #3

MDC Inpatient Margin Analysis

- Selectors to filter based on timeframes, Entity and FinClass.
- Scatter chart visualization with ALOS on Y axis, Direct Margin Per Case on the X axis, MDC as representing the circle icon, and cases controlling the size of the circle icon.
- Matrix visualization with MDC and drill path to MSDRG as the rows. Multiple key dimensions and measures as the values (displayed as columns).
- Tooltip embedded on scatter chart. KPI boxes and clustered column chart utilized.



In order to utilize this training report you must have MDC filled out in Axiom.
This report utilizes MDC short description column.

KaufmanHall

AXIOM

Thank You